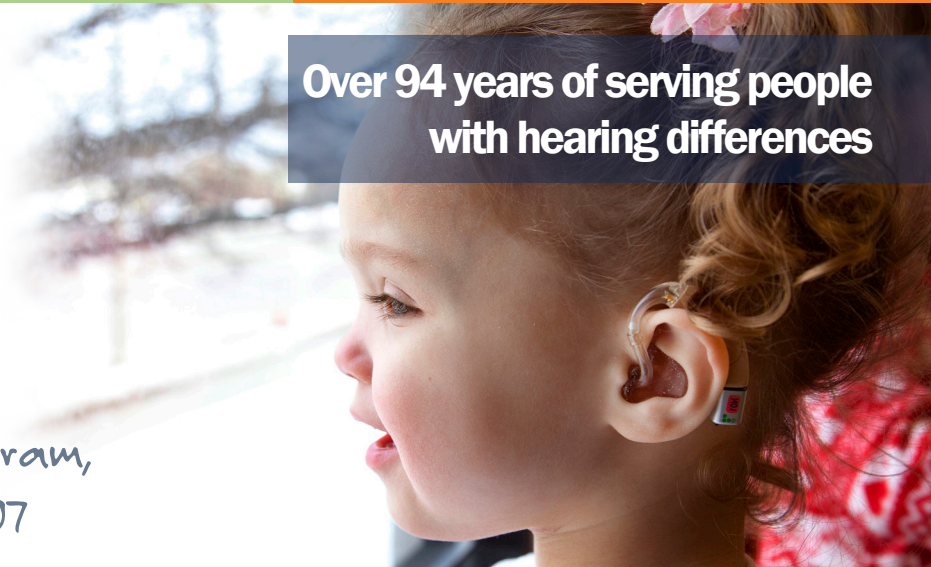




Over 94 years of serving people with hearing differences

Nation's First TeleIntervention Program, established in 2007



ConnectHEAR TeleIntervention

TeleIntervention

ConnectHEAR is a nationally recognized program at HEAR Wisconsin that provides **specialized services, via TeleIntervention**, for families of infants and children who have hearing differences. For more than a decade, this program has enabled Wisconsin families to access individualized, high quality online therapy services provided **by Certified Listening and Spoken Language Auditory-Verbal professionals**.

Allows access to experts - no matter where a family may live. ConnectHEAR is especially suited for families who live in areas with limited or no access to specialized intervention. Families can choose therapy services with providers who have specific knowledge and experience teaching spoken language to children with hearing differences and who can address the unique needs of these children and their families.

No age is too young for early intervention and every month can matter! Children who begin quality intervention services earlier versus later have the best potential for speech and language abilities that are on par with typical hearing peers.

Amy Peters Lalios, MA, CCC-A, LSLs CERT. AVT
Director of Therapy Services & ConnectHEAR
(414) 604-7206 • alalios@hearwi.org



Amy Peters Lalios joined HEAR Wisconsin in 2005 as the first Certified Auditory-Verbal Therapist in Wisconsin. HEAR Wisconsin was the first in the country to begin providing therapy via TeleIntervention to families of children with hearing differences. Amy has written about TI services as well as participated as an inaugural member of the TeleIntervention Collaborative Learning Community of the National Center for Hearing Assessment and Management (NCHAM).

Proven Success

Therapy services via online TeleIntervention sessions can be as effective as in-person sessions. In fact, for some aspects of therapy, TeleIntervention outcomes have been found to be better.

Results of a study¹ evaluating the benefits of TeleIntervention (TI) as compared to in-person services, reflected outcomes² for TI are as effective as in-person group for:



Auditory Development



Expressive Communication

In fact, some aspects of therapy were found to have better outcomes with TI. **Statistically significant differences in favor of TI compared to in-person** for:



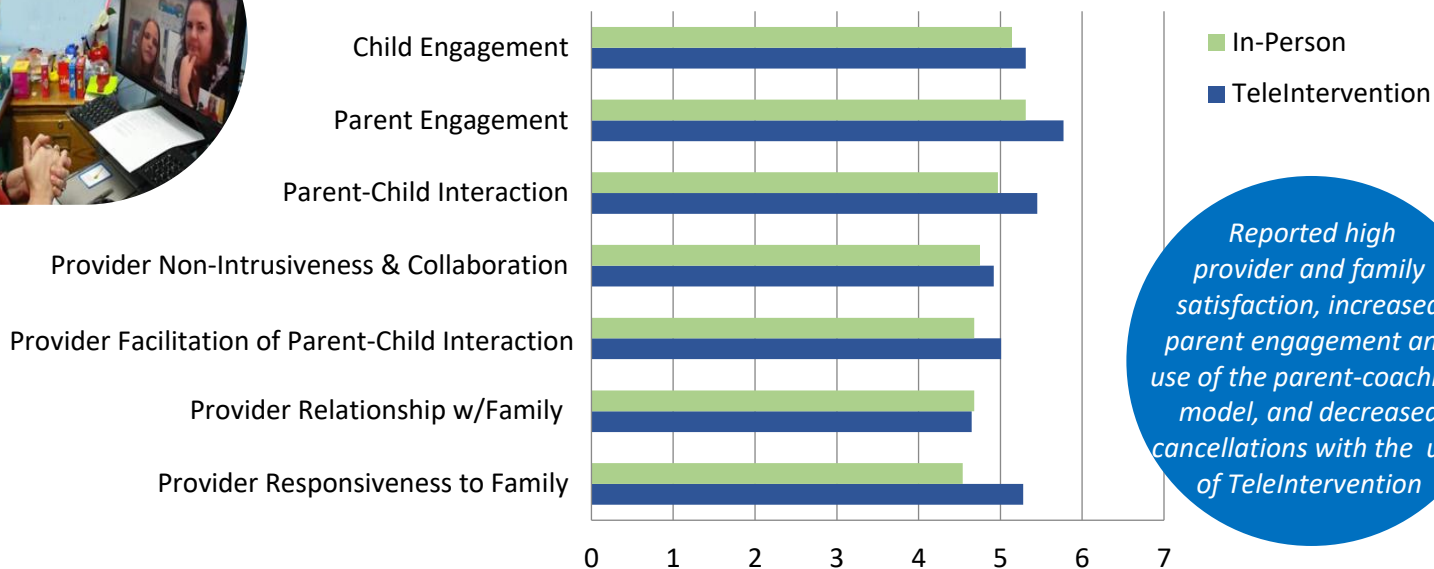
Receptive Communication



Total Language Scores



Home Visit Rating Scales Post-Test



Reported high provider and family satisfaction, increased parent engagement and use of the parent-coaching model, and decreased cancellations with the use of TeleIntervention

The Home Visit Rating Scales was used to measure the quality of interaction among the provider, the parent, and the child. Analysis of results showed that the TI group scored statistically significantly better in regard to the provider's responsiveness to the parent, as well as stronger parent engagement with the child.³



Access to Experts and Ongoing Support



ConnectHEAR provides opportunity to access:

- **Listening and Spoken Language Certified Auditory-Verbal professionals** who have extensive training and experience working with families of children of all ages from infancy through school age and with all types of hearing differences
- **Ongoing guidance and support** so parents learn how to help grow their child's auditory, speech and language abilities in the home
- **Individualized** activities, resources and learning materials
- **Ongoing assessment and monitoring of progress**
- **Consultation** to clients' Birth-to-Three providers, audiologists, schools and other professionals

To learn more and to refer, contact Amy Peters Lalius, Director of Therapy Services (414) 604-7206 • alalius@hearwi.org



This therapy model benefited me because it equipped me, my child's number one therapist, with the tools and strategies to work on my child's auditory and listening skills in our daily lives all week long. This delivery model made Auditory-Verbal Therapy a possibility for our family. Without it, we would have had to drive over 2 hours one way to get the therapy which would not have been possible due to time and financial constraints.

~TI parent

¹ Behl, D.D., et al (2017). A Multisite Study Evaluating the Benefits of Early Intervention via Telepractice, *Infants & Young Children*, 30 (2), 147-161.

² Auditory Skills Checklist, MacArthur-Bates Communication Developmental Inventory, *Preschool Language Scale -5th Edition*.

³ Blaiser, Behl, Callow-Heusser, White. (2013, Vol.5 No. 2 Fall). Measuring Costs and Outcomes of Tele-Intervention When Serving Families of Children Who are Deaf/Hard-of-Hearing, *International Journal of Telerehabilitation*, University of Pittsburgh, 3-10.